

# GOURMET GUIDE

INNOVATIVE CULINARY SOLUTIONS BY ZWILLING J.A. HENCKELS | FALL & WINTER 2015



ZWILLING  
J.A. HENCKELS



**NEW**  
**STAUB**  
**TOMATO**  
**COCOTTE**  
3Qt \$329 \$180



PASSION FOR THE BEST





## TASTE THE EXCELLENCE



### OVAL COCOTTE

#### HOT DEAL

4.25Qt ~~\$360~~ **\$220** 39% Off

Mini .25Qt ~~\$90~~ **\$75**  
5.75Qt ~~\$390~~ **\$260**  
8.5Qt ~~\$520~~ **\$390**

3.25Qt ~~\$800~~ **\$180**  
7.0Qt ~~\$420~~ **\$300**  
12.75Qt ~~\$630~~ **\$450**



### CHISTERA BRAISER

#### HOT DEAL 2.5Qt CHERRY

~~\$300~~ **\$150** 50% Off

2.5Qt ~~\$300~~ **\$200**  
4Qt ~~\$325~~ **\$250**



### NEW PUMPKIN COCOTTE

#### HOT DEAL

3.5Qt ~~\$350~~ **\$175** 50% Off



### NEW VEGETABLE COCOTTE

4.25Qt ~~\$450~~ **\$300**



### NEW PIG COCOTTE

1Qt ~~\$220~~ **\$150**



A



B

A. **NEW** LID HOLDER

~~\$80~~ **\$50**

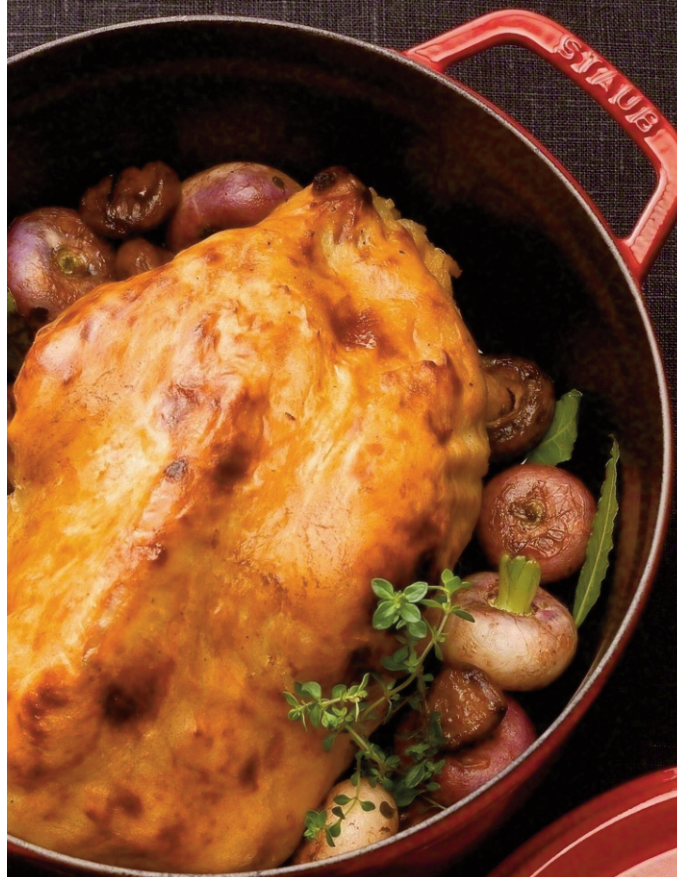
B. **NEW** COW KNOB

~~\$31.50~~ **\$25**

Additional styles to choose from

## CHOICE OF CHEFS

Renowned for its unrivalled combination of beauty, performance and quality, Staub has become the choice of professional chefs worldwide.



### MATTE BLACK ENAMEL INTERIOR

Perfect for searing, braising and roasting food, the matte black enamel interior requires no seasoning before use, distributes heat evenly and effectively and won't discolour, scratch or chip.

### HEAT RESISTANT KNOB

The brass or nickel knob is heat resistant up to 250°C.

## ROUND COCOTTE

Mini .25Qt ~~\$90~~ **\$70**

4Qt ~~\$300~~ **\$180**

**HOT DEAL** 5.5Qt ~~\$360~~ **\$220** 39% Off

7Qt ~~\$390~~ **\$260**

9.0Qt ~~\$495~~ **\$350**

13.25Qt ~~\$630~~ **\$450**



## A VARIETY OF STYLES & COLOURS

Staub products go elegantly from kitchen to table.

Some styles not available in all colours



## SECRETS OF THE STAUB LID

The substantial weight of the flat lid guarantees 10% more moisture retention than competitors and the innovative self-basting spikes ensure a continuous rainfall effect over the food for 9X juicier results.

Tested by Cetim Cermat (11-2009)

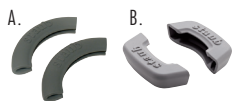




**NEW** CAST IRON  
ROUND LILLY TRIVET  
9" ~~\$80~~ \$55



**NEW** WOODEN  
MAGNETIC TRIVET  
ROUND 6.5" ~~\$40~~ \$30  
ROUND 8.75" ~~\$50~~ \$35  
OVAL 8"x6" ~~\$40~~ \$30  
OVAL 11"x8" ~~\$50~~ \$35



**NEW** SILICONE HOLDER SET  
A. Round ~~\$20~~ \$15  
B. Rectangular ~~\$40~~ \$30

## NEW CAST IRON SERVEWARE

Expanding on a range of cast iron cookware, Staub's presentation serveware pieces enable you to prepare and beautifully present wholesome and tasty dishes.



**NEW** HORS D'OEUVRE PLATE  
8.25" ~~\$95~~ \$75



**NEW** SQUARE DINNER PLATE  
7.875" ~~\$85~~ \$65  
9.375" ~~\$95~~ \$75



FRY PAN  
**HOT DEAL 10" CHERRY & BLACK**  
~~\$195~~ \$98 50% Off

10" ~~\$195~~ \$130  
12" ~~\$235~~ \$170\*

\*Available in grey, blue & grenadine



SQUARE GRILL PAN  
**HOT DEAL 10" ~~\$195~~ \$98 50% Off**  
12" ~~\$235~~ \$150



**NEW** DOUBLE HANDLE  
ROUND GRILL PAN  
10" ~~\$175~~ \$130  
12" ~~\$200~~ \$140



**NEW** DOUBLE HANDLE  
SQUARE GRILL PAN  
11" ~~\$200~~ \$140  
13" ~~\$240~~ \$175



WOK  
With glass lid, rack, wooden spatula, chopstick  
**HOT DEAL 12" CHERRY ~~\$310~~ \$150 52% Off**  
12" ~~\$310~~ \$200  
14.5" ~~\$340~~ \$250\*

\*Available in black, grey & cherry



PAELLA PAN  
**HOT DEAL 13" CHERRY ~~\$260~~ \$130 50% Off**  
13" ~~\$260~~ \$180



CRÊPE PAN WITH WOOD HANDLE  
11" ~~\$145~~ \$110



FRY PAN WITH WOOD HANDLE  
**HOT DEAL 9" ~~\$180~~ \$100 44% Off**  
11" ~~\$200~~ \$150



SAUCE PAN  
1.25Qt ~~\$240~~ \$160  
3Qt ~~\$260~~ \$200



LOAF PAN WITH LID  
1.5Qt ~~\$240~~ \$160



VERTICAL ROASTER  
**HOT DEAL**  
9.5" ~~\$180~~ \$100 44% Off



TEAPOT  
Infusion ball included  
1.16Qt ~~\$200~~ \$150



TAJINE  
Cast iron base, ceramic dome  
1.6Qt ~~\$240~~ \$180



FONDUE SET  
Mixed service fondue set  
2.0Qt ~~\$270~~ \$200



## STUFFED PEPPERS IN MINI ROUND COCOTTES

Ingredients for 4 servings

- 1 red bell pepper
- 2 onions
- 4 garlic cloves
- 6 tbsp olive oil
- 250 ml / 1 cup vegetable stock
- 2-3 tsp sambal olek (hot chili puree)
- 150 ml / 2/3 cup cream
- 4 yellow bell peppers
- 150 g / 1 cup cooked rice
- 400 g / 1 3/4 cup ground meat (pork/beef mix)
- 1 egg
- Salt, pepper, paprika
- 2 tbsp chopped parsley
- 1 tbsp oregano
- 50 g / 1/4 cup alpine cheese, finely diced

Preparation time: approximately 40min  
Cooking time: 35min

1. Cut the red pepper in half; remove seeds and dice. Peel two cloves of garlic and the shallots, and dice finely as well. Sauté everything in 2tbsp olive oil. Add stock, sambal olek, and cream, and simmer on medium heat for about 15 minutes. Then puree everything thoroughly, salt to taste and divide among four cocottes.

2. Meanwhile, cut the top quarter off the top of the yellow peppers like a lid. Remove the core. Mix rice with ground meat and egg in a large bowl. Peel the onion and the remaining garlic, dice finely and sauté in 2 tbsp olive oil. Add the mixture to the meat and season everything with plenty of salt, pepper and paprika. Stir in the chopped herbs and cheese.

3. Preheat the oven to 200°C / 395°F. Fill the peppers with the meat/rice mixture and cover them with the pepper lids. Drizzle the peppers with the remaining oil, season with salt and pepper, and put each pepper into one of the cocottes of sauce. Place the cocottes onto the bottom of the preheated oven and braise for around 35-40 minutes.

Visit [www.zwilling.ca](http://www.zwilling.ca) for more recipes



## CERAMIC COOKWARE



Staub ceramics complement cast-iron as a lighter, versatile oven-to-table alternative. Available in a variety of styles and colours, there is a product to suit every occasion and any recipe.



### NEW PUMPKIN COCOTTE

.50qt ~~\$50~~ \$30

.75qt ~~\$60~~ \$40

Available in orange or ivory



### NEW OVAL MULTI BOWL SET

2PC (1.48Qt & 2.54Qt)

~~\$85~~ \$60



### OVAL DISH

**HOT DEAL** WHITE 4.5Qt

~~\$70~~ \$35 50% Off

.47Qt ~~\$80~~ \$20 1Qt ~~\$40~~ \$28

2.5Qt ~~\$50~~ \$35 4.5Qt ~~\$70~~ \$50



### NEW OIL & VINEGAR SET

~~\$60~~ \$40



### NEW BOWL

S ~~\$20~~ \$13

M ~~\$25~~ \$17

L ~~\$30~~ \$20



### SERVING BOWL

S ~~\$35~~ \$25

L ~~\$60~~ \$40



### NEW SQUARE

APPETIZER SET & TRAY

~~\$80~~ \$55



### NEW PITCHER

~~\$60~~ \$40



### RECTANGULAR DISH

**HOT DEAL** WHITE 4.75Qt

~~\$70~~ \$35 50% Off

.5Qt ~~\$80~~ \$20 1.25Qt ~~\$40~~ \$28

2.5Qt ~~\$50~~ \$35 4.75Qt ~~\$70~~ \$50



### TERRINE WITH LID

~~\$55~~ \$40



### NEW SALT CROCK WITH

WOODEN SPOON & LID

~~\$40~~ \$25



### RAMEKINS, 2PK

~~\$30~~ \$20



### ROUND MINI COCOTTE

SET OF 3

~~\$80~~ \$60



### NEW STORAGE POT

~~\$55~~ \$35



### PIE DISH

9" ~~\$45~~ \$35

11" ~~\$55~~ \$40



### NEW SUGAR BOWL

WITH CERAMIC SPOON

~~\$45~~ \$30



### NEW GARLIC

KEEPER WITH LID

~~\$40~~ \$25



### NEW CREAMER

~~\$25~~ \$15



### NEW SALT & PEPPER SHAKERS

~~\$20~~ \$13



### NEW MUG

~~\$18~~ \$12



### NEW UTENSIL HOLDER

WITH SILICONE MAT

~~\$45~~ \$30





ZWILLING  
J.A.HENCKELS

## ZWILLING® SENSATION COOKWARE

Elegantly constructed from 18/10 stainless steel, the ZWILLING® Sensation cookware series features a premium 5-ply clad construction for optimal heat distribution and an advanced SILVINOX® surface treatment for long-lasting shine.



MADE IN BELGIUM



FRY PAN

8" ~~\$140~~ \$100  
9.5" ~~\$190~~ \$130  
11" ~~\$240~~ \$160



**NEW** DURASLIDE® ULTRA  
NON-STICK FRY PAN

**HOT DEAL**

9.5" ~~\$230~~ \$140 39% Off  
11" ~~\$280~~ \$170 39% Off



SAUCE POT WITH LID

1.5Qt ~~\$230~~ \$184  
3Qt ~~\$265~~ \$212  
5.5Qt ~~\$275~~ \$300



WOK

12" ~~\$250~~ \$190  
Glass Lid ~~\$80~~ \$50

Lid sold  
separately



10PC SET

Set includes 9.5" fry pan, 1.5Qt saucepan with lid, 3Qt saucepan with lid, 3Qt sauté pan with lid, 8Qt stockpot with lid, 9.5" steamer insert with silicone gasket

**HOT DEAL** ~~\$1,550~~ \$900 42% Off



SAUCIER WITH LID  
2Qt ~~\$245~~ \$200



**NEW** ROASTING PAN  
15.7"x13.3" ~~\$420~~ \$330



**NEW** GRILL PAN  
11" ~~\$250~~ \$200



PASTA INSERT  
9.5" ~~\$155~~ \$124



STEAMER INSERT  
WITH SILICONE GASKET  
9.5" ~~\$155~~ \$124





ZWILLING  
J.A. HENCKELS

## NEW ZWILLING® AURORA COOKWARE

ZWILLING® Aurora's timeless design and world-class performance make this 5-ply clad cookware series an excellent choice for professional chefs or home cooks alike.

 MADE IN BELGIUM



### NEW 10PC SET

Set includes 9.5" fry pan, 1.5Qt saucepan with lid, 3.0Qt saucepan with lid, 3.0Qt sauté pan with lid, 5.5Qt saucepot with lid, 9.5" steamer insert

**HOT DEAL** ~~\$1,200~~ \$800 33% Off



### NEW FRY PAN

8" ~~\$130~~ \$100

9.5" ~~\$170~~ \$120

11" ~~\$240~~ \$150



### NEW 7PC SET

Set includes 9.5" fry pan, 3.0Qt saucepan with lid, 3.0Qt sauté pan with lid, 5.5Qt saucepot with lid

**HOT DEAL** ~~\$950~~ \$600 37% Off

## NEW ZWILLING® PASSION COOKWARE

For many, cooking can be a real passion and naturally these individuals demand the highest quality products. Combining top-of-the-line materials and state-of-the-art design, the ZWILLING® Passion series is made with passionate cooks in mind.



### NEW 10PC SET

Set includes 3.2Qt sauté pan with lid, 1.6Qt Saucepan with lid, 2.1Qt saucepan with lid, 3.8Qt saucepot with lid, 6.5Qt stockpot with lid

**HOT DEAL** ~~\$750~~ \$350







ZWILLING  
J.A.HENCKELS

## ZWILLING® TRU CLAD COOKWARE

Tru Clad's high-quality construction and unique design make it one of ZWILLING's best-selling cookware series. Hollow-cast handles and a 3-ply clad body provide optimal comfort and performance while cooking.



ROASTER WITH ADJUSTABLE  
NON-STICK RACK

**HOT DEAL** 16" ~~\$225~~ \$130 42% Off



WOK WITH LID  
13" ~~\$190~~ \$135



### 10PC SET

Set includes 8" fry pan, 10" fry pan, 1Qt saucepan with lid, 2Qt saucepan with lid, 3Qt sauté pan with lid, 6Qt saucepot with lid

**HOT DEAL** ~~\$675~~ \$300 56% Off



SAUCIER WITH LID  
3Qt ~~\$140~~ \$108



STOCK POT WITH LID  
8Qt ~~\$235~~ \$180



FRY PAN  
8" ~~\$85~~ \$55  
10" ~~\$115~~ \$77  
12" ~~\$135~~ \$90



STIR FRY PAN WITH LID  
& HALF MOON INSERT  
13" ~~\$250~~ \$180



### CERAFORCE® ULTRA CERAMIC NON-STICK FRY PAN

#### **HOT DEAL**

8" ~~\$110~~ \$60 45% Off | 10" ~~\$140~~ \$80 43% Off | 12" ~~\$165~~ \$95 42% Off





ZWILLING  
J.A.HENCKELS

## ZWILLING® SOL II COOKWARE

Combining beautiful satin exteriors with rounded, ergonomic handles, the ZWILLING® Sol II cookware series is one of exceptional value. Available in 18/10 stainless steel or ceramic non-stick finishes.

### NEW DURASLIDE® ULTRA NON-STICK FRY PAN

#### HOT DEAL

8" ~~\$85~~ \$45 47% Off    9.5" ~~\$105~~ \$55 48% Off  
11" ~~\$125~~ \$65 48% Off    12.5" ~~\$145~~ \$75 48% Off



#### 10PC SET

Set includes 9.5" fry pan, 1.5Qt saucepan with lid, 3Qt saucepan with lid, 3Qt sauté pan with lid, 6Qt stock pot with lid, 9.5" steamer insert

**HOT DEAL** ~~\$650~~ \$325 50% Off



#### 10PC SET WITH CERAFORCE® ULTRA CERAMIC NON-STICK COATING

Set includes 9.5" fry pan, 1.5Qt saucepan with lid, 3Qt saucepan with lid, 3Qt sauté pan with lid, 6Qt stock pot with lid, 9.5" steamer insert

~~\$690~~ \$400

## ZWILLING® PLUS SPECIALTY COOKWARE



#### ROASTER

**HOT DEAL** 15"x10" ~~\$210~~ \$100 52% Off



#### NEW NON-STICK CREPE PAN

11" ~~\$130~~ \$80



#### NEW GRILL PAN

9.5" ~~\$100~~ \$60

## NEW ZWILLING® MARQUINA PLUS



#### DURASLIDE® GRANITE ALUMINUM NON-STICK FRY PAN

8" ~~\$80~~ \$40 | 9.5" ~~\$90~~ \$50 | 11" ~~\$105~~ \$60





## SALT & PEPPER MILL, STAINLESS STEEL

SALT ~~\$50~~ \$35  
PEPPER ~~\$50~~ \$35

**ZWILLING**  
J.A. HENCKELS

BAMBOO  
GADGET  
HOLDER  
~~\$50~~ \$35

## ZWILLING® PURE KITCHEN UTENSILS

From whisking and flipping to scooping and grating, ZWILLING® has a wide-range of professional quality tools and gadgets that are crafted from heavy-gauge 18/10 stainless steel and ergonomically shaped for balance and control.

- A. PASTRY SCRAPER SILICONE ~~\$23.50~~ \$19
- B. CHEESE SLICER ~~\$22~~ \$18
- C. CAN OPENER ~~\$45~~ \$37
- D. SERVING SPOON ~~\$27~~ \$22
- E. WHISK LRG ~~\$22~~ \$18
- F. GARLIC PRESS ~~\$55~~ \$44
- G. **NEW** COOKING TONGS ~~\$80~~ \$24
- H. Y PEELER ~~\$19.50~~ \$15
- I. SPAGHETTI RAKE ~~\$27~~ \$21
- J. VEGETABLE PEELER ~~\$19.50~~ \$15
- K. CHEESE GRATER WITH 2 INTERCHANGEABLE GRATERS ~~\$27~~ \$22
- L. PASTRY BRUSH SILICONE ~~\$23.50~~ \$19
- M. SOUP LADLE ~~\$30~~ \$24
- N. PIZZA CUTTER ~~\$27~~ \$22
- O. SLOTTED TURNER, SILICONE ~~\$30~~ \$24
- P. ICE CREAM SCOOP ~~\$22~~ \$18



## ZWILLING® WINE COLLECTION

Perfect for holiday entertaining or gift giving, the ZWILLING® Wine Collection offers products that are both visually appealing and enhance the enjoyment of fine wines.



18/10 STAINLESS STEEL WINE COOLER  
~~\$50~~ \$35



SOMMELIER, 4PC SET  
~~\$130~~ \$90



PREMIUM WAITERS KNIFE  
~~\$50~~ \$35



ZWILLING  
J.A. HENCKELS

## NEW ZWILLING® SORRENTO DOUBLE WALL GLASSES

Ideal for coffee, tea, hot chocolate and more, these glasses are as stylish as they are functional. Mouth-blown by skilled artisans, each double-walled glass keeps hot drinks hot and cold drinks cold without condensation.

A. ESPRESSO, 2PK  
~~\$20~~ \$15

B. CAPPUCCINO, 2PK  
~~\$25~~ \$19

C. TEA, 2PK  
~~\$25~~ \$19

D. LATTE, 2PK  
~~\$30~~ \$23

E. DESSERT BOWL, 2PK  
~~\$30~~ \$23



## NEW GLASS ACCESSORIES

Add a touch of class to your home with these new glass accessories from ZWILLING®.



**NEW**  
GLASS STORAGE JARS  
SET, 3PC  
SM, MED, LRG ~~\$60~~ \$40  
Also available:  
2PC MED ~~\$40~~ \$28  
2PC LRG ~~\$50~~ \$35



**NEW**  
OIL & VINEGAR  
SPRAYER SET,  
GLASS  
~~\$40~~ \$30



**NEW**  
CERAMIC  
SALT & PEPPER SET,  
GLASS  
~~\$40~~ \$30

## ZWILLING® FLATWARE

Choose from a variety of ZWILLING flatware patterns, all in 18/10 stainless steel, for an exceptional dining experience.



**NEW** HONEY SPOON  
~~\$8~~ \$6



**NEW** ESPRESSO SPOON, 6PC  
~~\$25~~ \$17



**NEW** SALAD SPOON  
SET, 2PC  
~~\$40~~ \$27



**NEW** ABERDEEN, 20PC  
~~\$145~~ \$90



JESSICA, 20PC  
~~\$145~~ \$90



BELLASERA, 20PC  
~~\$145~~ \$90





63° ROCKWELL HARDNESS

ACUTE 19°-24° EDGE ANGLE

SG2 MICRO-CARBIDE STEEL CORE ENCAPSULATED IN 100 LAYERS OF ALTERNATING STEEL TO REVEAL AN EXQUISITE CHEVRON DAMASCUS PATTERN

STAINLESS STEEL HALF BOLSTER & FULL TANG

LINEN MICARTA TRIPLE-RIVETED HANDLES WITH BOB'S SIGNATURE PIN

**EUROLINE DAMASCUS CHEF'S KNIFE**

6" ~~\$415~~ \$330  
8" ~~\$500~~ \$400  
10" ~~\$565~~ \$450



61° ROCKWELL HARDNESS

ACUTE 19°-24° EDGE ANGLE

STAINLESS STEEL HALF BOLSTER & FULL TANG

FC61 FINE-CARBIDE STEEL

**NEW EUROLINE ESSENTIAL CHEF'S KNIFE**

SOFT-TOUCH TRIPLE-RIVETED HANDLES WITH BOB'S SIGNATURE PIN

6" ~~\$220~~ \$175  
**TRY ME 8" ~~\$250~~ \$150 40% Off**  
10" ~~\$315~~ \$250



**NEW** EUROLINE ESSENTIAL STARTER KIT, 6PC  
**HOT DEAL** ~~\$1,020~~ \$750 26% Off

ALSO AVAILABLE/SOLD SEPARATELY:  
WALNUT KNIFE BLOCK, 14 SLOTS  
~~\$130~~ \$104

DOUBLE CUT SHARPENING STEEL  
~~\$75~~ \$60



SHARPENING KIT, 6PC  
INCLUDES INSTRUCTIONAL DVD  
~~\$375~~ \$300

**KRAMERO** by ZWILLING® 

Master bladesmith Bob Kramer has spent decades in the craft of knife making in pursuit of perfection. The EUROLINE series offer home cooks an opportunity to experience the same unrivaled performance of a Bob Kramer original.

## EUROLINE DAMASCUS

 HANDCRAFTED IN SEKI, JAPAN



PARING 3.5" ~~\$260~~ \$210



UTILITY 5" ~~\$325~~ \$260



CARVING 9" ~~\$500~~ \$400



BREAD, INVERTED SCALLOPED EDGE 10" ~~\$500~~ \$400



SANTOKU 7" ~~\$500~~ \$400

## NEW EUROLINE ESSENTIAL

 HANDCRAFTED IN SEKI, JAPAN



**NEW** PARING 3.5" ~~\$125~~ \$100



**NEW** UTILITY 5" ~~\$190~~ \$150



**NEW** BREAD, INVERTED SCALLOPED EDGE 10" ~~\$250~~ \$200



**NEW** SANTOKU 7" ~~\$250~~ \$200





ZWILLING® PRO

MADE IN GERMANY 

ZWILLING  
J.A. HENCKELS



PARING **TRY ME** 4" ~~\$87~~ \$50 43% Off



**NEW** TOMATO/BAGEL, ZW15 SCALLOPED EDGE  
**TRY ME** 5" ~~\$118~~ \$80 32% Off



**NEW** PERFECT PETTY, ZW15 SCALLOPED EDGE  
**TRY ME** 5.5" ~~\$125~~ \$90 28% Off



UTILITY 6" ~~\$125~~ \$100



CARVING 8" ~~\$143~~ \$115  
10" ~~\$175~~ \$140



**NEW** CHEF'S, ULTIMATE SCALLOPED EDGE 8" ~~\$200~~ \$160



BREAD 8" ~~\$143~~ \$115



SANTOKU, GRANTON EDGE  
5.5" ~~\$143~~ \$115 | 7" ~~\$187~~ \$150



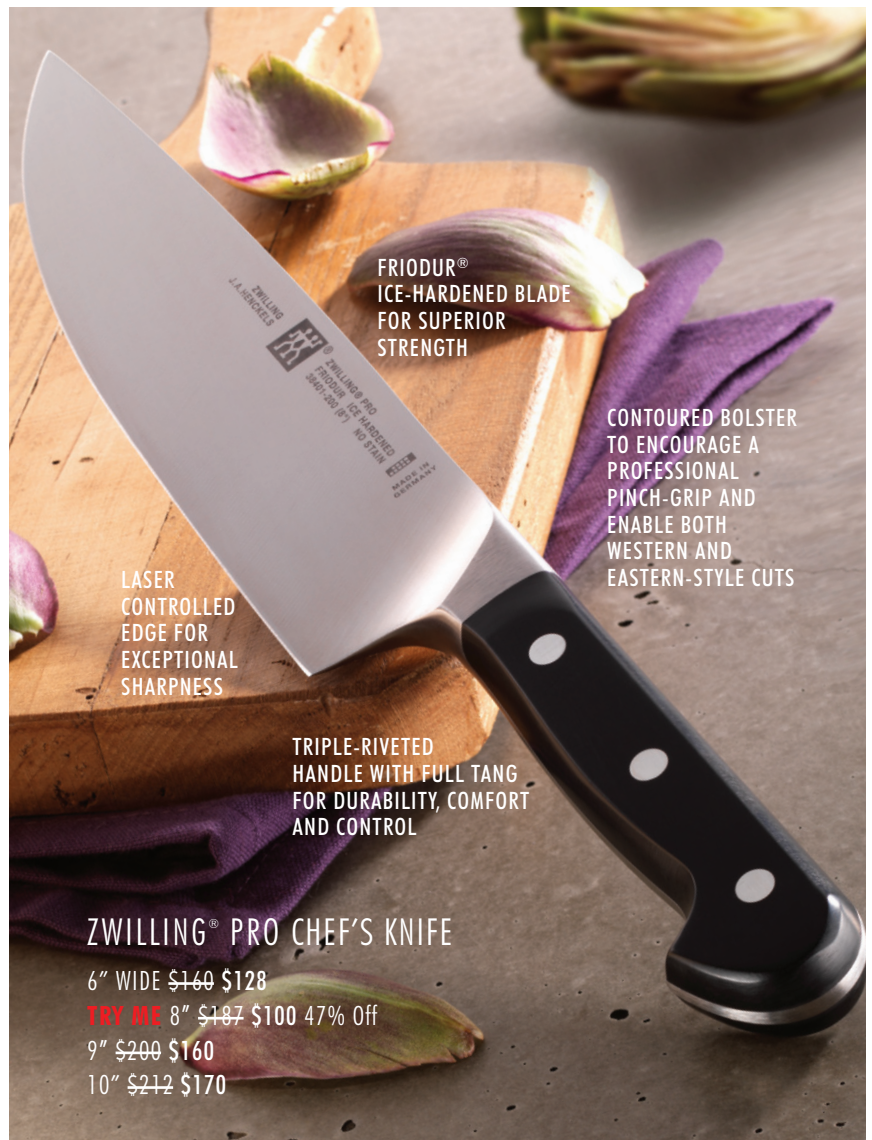
**NEW** ROCKING SANTOKU, GRANTON EDGE  
5.5" ~~\$160~~ \$128 | **TRY ME** 7" ~~\$193~~ \$100 48% Off



CLEAVER 7" ~~\$220~~ \$175



CARVING SET, 2PC **HOT DEAL** ~~\$260~~ \$150 42% Off



FIODUR®  
ICE-HARDENED BLADE  
FOR SUPERIOR  
STRENGTH

CONTOURED BOLSTER  
TO ENCOURAGE A  
PROFESSIONAL  
PINCH-GRIP AND  
ENABLE BOTH  
WESTERN AND  
EASTERN-STYLE CUTS

LASER  
CONTROLLED  
EDGE FOR  
EXCEPTIONAL  
SHARPNESS

TRIPLE-RIVETED  
HANDLE WITH FULL TANG  
FOR DURABILITY, COMFORT  
AND CONTROL

ZWILLING® PRO CHEF'S KNIFE

6" WIDE ~~\$160~~ \$128

**TRY ME** 8" ~~\$187~~ \$100 47% Off

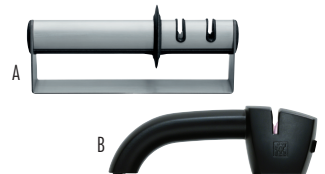
9" ~~\$200~~ \$160

10" ~~\$212~~ \$170



KNIFE BLOCK SET, 6PC

**HOT DEAL** ~~\$560~~ \$400 29% Off  
WITH BONUS 8PC ZWILLING®  
CONTEMPORARY STEAK SET  
\$165 VALUE



A. TWINSHARP® SELECT PULL-THROUGH SHARPENER

**HOT DEAL** ~~\$75~~ \$40 47% Off

B. ZWILLING® SHARP PRO PULL-THROUGH  
SHARPENER

**HOT DEAL** ~~\$81~~ \$45 44% Off



**NEW**  
ANGULAR BLOCK

10 SLOTS  
~~\$100~~ \$80

18 SLOTS  
~~\$125~~ \$100



STEAK SET  
4PC

**HOT DEAL**  
~~\$350~~ \$200  
43% Off



## TWIN® PROFECTION

MADE IN GERMANY 



BEECHWOOD CUTTING BOARD  
NATURAL OR CHESTNUT  
15"x23"  
**HOT DEAL**  
~~\$125~~ \$75 40% Off



ZWILLING® CONTEMPORARY STEAK SET, 8PC  
**HOT DEAL**  
~~\$165~~ \$70  
58% Off

## TWIN® FOUR STAR II

MADE IN GERMANY 



KNIFE BLOCK SET, 6PC  
**HOT DEAL** ~~\$560~~ \$400 29% Off  
WITH BONUS 8PC ZWILLING® CONTEMPORARY STEAK SET \$165 VALUE



**NEW**  
WOOD FIBER CUTTING BOARD  
SM ~~\$32~~ \$25  
MED ~~\$38~~ \$30  
LRG ~~\$50~~ \$40



ZWILLING  
J.A. HENCKELS

## NEW ZWILLING® TRADITION

MADE IN SPAIN 



**NEW** PARING 4" ~~\$48~~ \$35



**NEW** TOMATO/BAGEL, SCALLOPED EDGE  
5" ~~\$50~~ \$40



**NEW** UTILITY 6" ~~\$68~~ \$55



CHEF'S, GRANTON EDGE **TRY ME** 8" ~~\$112~~ \$70 38% Off



**NEW** BREAD 8" ~~\$81~~ \$65



**NEW** BONING 5.5" ~~\$68~~ \$55



SANTOKU, GRANTON EDGE **TRY ME** 7" ~~\$100~~ \$60 40% Off



**NEW** VEGETABLE CLEAVER 7" ~~\$112~~ \$90



**NEW** CARVING SET, 2PC ~~\$105~~ \$80



**NEW**  
KNIFE BLOCK SET, 7PC  
**HOT DEAL**  
~~\$335~~ \$200 40% Off  
WITH BONUS 7" SANTOKU  
\$100 VALUE



STEAK SET, 4PC  
~~\$105~~ \$80



PULL THROUGH  
KNIFE SHARPENER,  
RED OR BLACK  
**HOT DEAL**  
~~\$44~~ \$30 32% Off



TWIN® SHARPENING STEEL 9"  
~~\$35~~ \$28



TWIN® SHARPENING STEEL 10"  
~~\$62~~ \$50



INVERTED  
SCALLOPED EDGE  
STEAK SET IN  
BAMBOO BOX,  
4PC  
~~\$160~~ \$100



BAMBOO IN-DRAWER KNIFE STORAGE,  
13 SLOTS  
~~\$81~~ \$65  
KNIVES NOT INCLUDED



## TWIN® SHEARS

A. MULTI PURPOSE KITCHEN SHEARS  
**HOT DEAL** ~~\$88~~ \$60 32% Off

B. MULTI PURPOSE KITCHEN SHEARS  
**HOT DEAL** ~~\$63~~ \$40 37% Off

C. POULTRY SHEARS  
~~\$63~~ \$50



64 LAYERS OF DAMASK-STYLE WAVES ENVELOPE THE CMV60 STEEL CORE

BLADE UNDERGOES CRYODUR® VACUUM TEMPERING FOR A REMARKABLE 60° ROCKWELL HARDNESS

ULTRA-DURABLE LINEN MICARTA D-SHAPED HANDLES

EDGE ENDURES THE HONBAZUKE HONING PROCESS FOR AN ACUTE 19°-24° EDGE ANGLE

## 5000DP KAIZEN GYUTOH (CHEF'S) KNIFE

6" ~~\$206~~ \$165  
8" ~~\$237~~ \$190  
9.5" ~~\$275~~ \$220

## 5000DP KAIZEN

 HANDCRAFTED IN SEKI, JAPAN



SHOTOH (PARING) 3.5" ~~\$150~~ \$120 | 5" ~~\$162~~ \$130



PERFECT PETTY **TRY ME** 5.5" ~~\$187~~ \$100 45% Off



CHUTOH (UTILITY) 6" ~~\$187~~ \$150



SANTOKU, GRANTON EDGE  
5.75" ~~\$206~~ \$165 | 7" ~~\$237~~ \$190



ROCKING SANTOKU **TRY ME** 7" ~~\$244~~ \$150 39% Off



BAMBOO BLOCK, 11 SLOTS,  
WITH STONE DRAWER  
**HOT DEAL** ~~\$125~~ \$50 60% Off

## 6000MCT ARTISAN

 HANDCRAFTED IN SEKI, JAPAN



SHOTOH (PARING) 3.5" ~~\$194~~ \$155 | 5" ~~\$219~~ \$175



SUJHIKI (CARVING KNIFE) 9.5" ~~\$306~~ \$245



BREAD, SCALLOPED EDGE 9" ~~\$294~~ \$235



SANTOKU  
**TRY ME** 5.5" ~~\$256~~ \$150 41% Off | 7" ~~\$294~~ \$235 20% Off



ROCKING SANTOKU **TRY ME** 7" ~~\$300~~ \$200 33% Off



MIYABI PULL THROUGH  
KNIFE SHARPENER  
~~\$75~~ \$60



TWIN® STONE PRO  
**HOT DEAL** ~~\$94~~ \$60 36% Off

MC63 SUPER STEEL CORE WRAPPED IN HAMMERED (TSUCHIME) STAINLESS STEEL, THEN MIRROR-POLISHED AND SHOT-BLASTED BY HAND

SCULPTED COCOBOLO PAKKAWOOD HANDLES INCLUDE EXCLUSIVE MOSAIC PIN, BRASS AND RED ACCENTS AND STAINLESS STEEL ENDCAP

CRYODUR® TEMPERED AND HONBAZUKE HONED FOR AN EXTREMELY DURABLE AND SHARP KATANA EDGE

## 6000MCT ARTISAN GYUTOH (CHEF'S) KNIFE

6" ~~\$256~~ \$205  
8" ~~\$294~~ \$235  
9.5" ~~\$344~~ \$275

MC63 MICRO-CARBIDE  
STEEL CORE SURROUNDED  
BY 100-LAYER FLOWER  
DAMASK PATTERN

GENUINE HAMON EDGE IS  
REMINISCENT OF LEGENDARY JAPANESE  
SWORDS IN ITS SCALPEL-LIKE PRECISION  
AND REMARKABLE EDGE RETENTION

STUNNING MASUR  
BIRCH D-SHAPED  
HANDLE FEATURES  
INTRICATE MOSAIC PIN,  
RED DETAILING AND  
ENGRAVED ENDCAP

BLADE  
UNDERGOES  
EXCLUSIVE  
CRYODUR®  
VACUUM  
TEMPERING AND  
HONBAZUKE  
HONING  
PROCESS

## 5000MCD-B BIRCHWOOD GYUTOH (CHEF'S) KNIFE

6" \$344 \$275

**TRY ME** 8" ~~\$369~~ \$250 32% Off

9.5" ~~\$438~~ \$350

## 5000MCD-B BIRCHWOOD

 HANDCRAFTED IN SEKI, JAPAN



SHOTOH (PARING) 3.5" ~~\$275~~ \$220 | 5" ~~\$294~~ \$235



CHUTOH (UTILITY) 6" ~~\$331~~ \$265



SANTOKU 7" ~~\$369~~ \$295



SUJHIKI (CARVING) 9.5" ~~\$425~~ \$340



BREAD 9" ~~\$369~~ \$295



**NEW** TUNGSTEN STEEL 9" ~~\$256~~ \$200



LIGHT BAMBOO BLOCK,  
12 SLOTS  
~~\$90~~ \$70

The Gourmet Guide recommends this fine retailer

Offer expires December 31, 2015. Saving discount from MSRP. All prices are suggested prices only at participating dealers. Dealers' prices may differ. All items may not be available in all stores but may be special ordered. Some items are subject to availability. No.99000-520. Printed in Canada. View online at [www.zwilling.ca/gourmet-guide](http://www.zwilling.ca/gourmet-guide). ZWILLING J.A. HENCKELS | 435 Cochrane Drive, Markham ON L3R 9R5 | [www.zwilling.ca](http://www.zwilling.ca)

